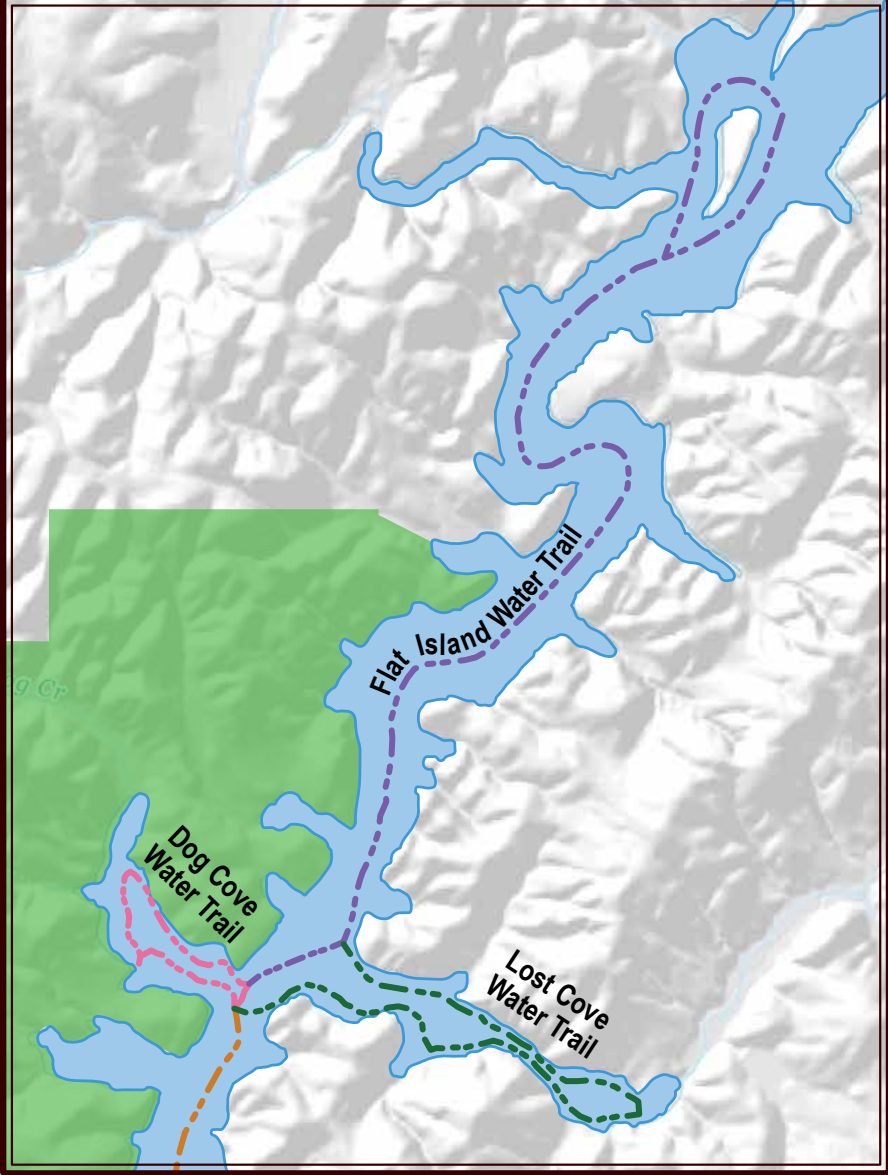
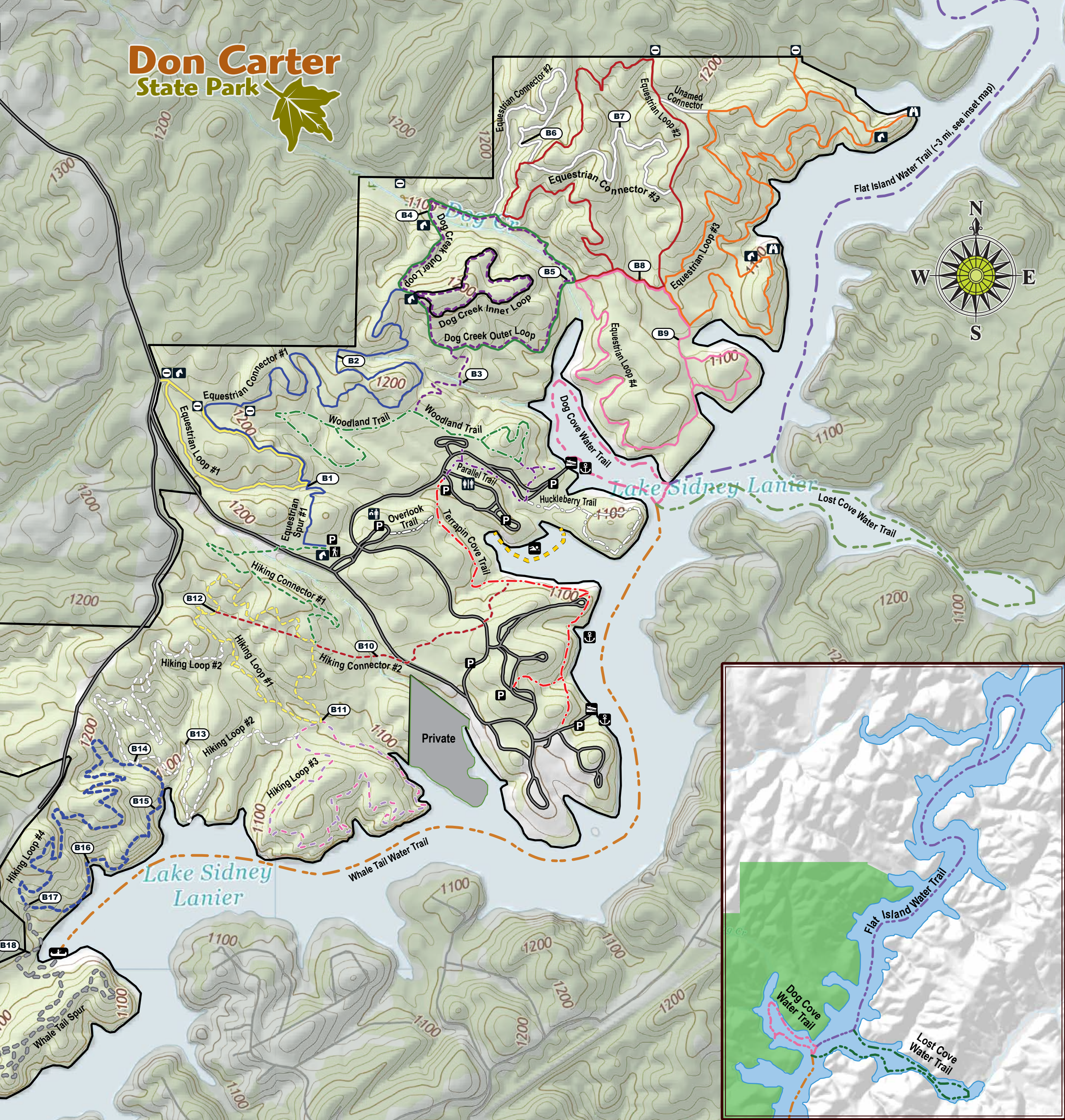
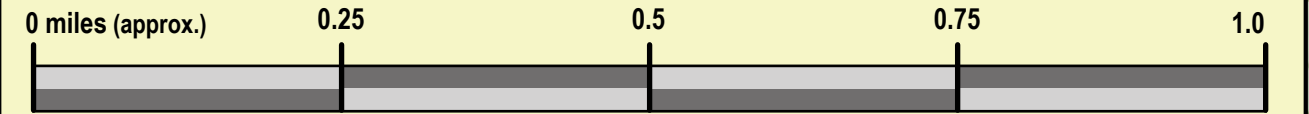


Don Carter State Park Trail Map

5000 N Browning Bridge Road • Gainesville, GA 30506 • 678-450-7726 • Reservations: 1-800-864-7275 • GaStateParks.org

LEGEND

Equestrian Trails - Solid Line		Short Hiking Trails - Dash/Dot Line	
	Equestrian Connector #1		Huckleberry Trail
	Equestrian Connector #2		Overlook Trail
	Equestrian Connector #3		Parallel Trail
	Equestrian Loop #1		Terrapin Cove Trail
	Equestrian Loop #2		Woodland Trail
	Equestrian Loop #3	Water Trails - Dash/Double-Dot Line	
	Equestrian Loop #4		Dog Cove Paddle Trail
	Equestrian Spur #1		Flat Island Paddle Trail
	Dog Creek Inner Loop		Lost Cove Paddle Trail
	Dog Creek Outer Loop		Whale Tail Paddle Trail
Long Hiking Trails - Dash Line			
	Dog Creek Inner Loop	Symbols	
	Dog Creek Outer Loop		Beach
	Hiking Connector #1		Boat Ramp
	Hiking Connector #2		Parking
	Hiking Loop #1		Restroom
	Hiking Loop #2		Farm Gate
	Hiking Loop #3		Tie Line
	Hiking Loop #4		Courtesy Dock
	Whale Tail Hiking Trail		Paddle Ramp
			Scenic Lookout
			Trailhead (long hikes)
			Visitors Center





Orientation: Each bridge has a number. Use them as landmarks to stay oriented. On the map, look for this symbol: **(B#)** If you call for help, tell the Park Ranger where you are, relative to these bridge numbers.
Emergencies / After-hours 678.465.7566

EQUESTRIAN TRAILS

Dog Creek Inner Loop

Easy - Natural surface - About 0.7 miles

This is a mixed-use trail for both hikers & equestrians (no bicycles permitted). Observe proper etiquette. Blazing: Black diamond. Gentle slopes. No bridges. Junctions with: Dog Creek Outer Loop (an external perimeter).

Dog Creek Outer Loop

Easy to moderate - Natural surface - About 1.2 miles

This is a mixed-use trail for both hikers & equestrians (no bicycles permitted). Observe proper etiquette. Blazing: Green diamond. Into & along the floodplain of Dog Creek. Two bridges (B4 & B5). Junctions with: Dog Creek Inner Loop; Equestrian Connector #1; Equestrian Loop #2, & Equestrian Loop #4.

Equestrian Connector #1

Easy - Natural surface - About 1.6 miles

Blazing: Blue diamond. Gentle slopes with some elevation changes. Two bridges (B1 & B2). Connects Equestrian Loop #1 & Equestrian Spur #1 to Dog Creek Outer Loop (which is a mixed-used trail).

Equestrian Connector #2

Easy - Natural surface - About 0.8 miles

Blazing: White diamond. Moderate slopes on occasion. Climbs to a ridge & back down. Connects Equestrian Loop #2 to Dog Creek Outer Loop (which is a mixed-use trail). Includes one bridge (B6).

Equestrian Connector #3

Easy - Natural surface - About 0.7 miles

Blazing: White diamond. Very gentle slopes. No bridges. Serves as a 'short-cut' from one side of Equestrian Loop #2 to the opposite site.

Equestrian Loop #1

Easy to moderate - Natural surface - About 0.9 miles

Blazing: Yellow diamond. One bridge (B1). Access to North Browning Bridge Road. Junctions with Equestrian Spur #1 & Equestrian Connector #1.

Equestrian Loop #2

Easy - Natural surface - About 2 miles

Blazing: Red diamond. Gentle slopes. One bridge (B8). Junctions with Equestrian Connector #2, Equestrian Connector #3, an unnamed connector, Equestrian Loop #3, Equestrian Loop #4 & Dog Creek Outer Loop (which is a mixed-use trail).

Equestrian Loop #3

Moderate to strenuous - Natural surface - About 2.8 miles

Blazing: Orange diamond. No bridges. Includes a couple short spurs & two scenic overlooks of the lake. Junctions with Equestrian Loop #2 & Equestrian Loop #4.

Equestrian Loop #4

Easy to moderate - Natural surface - About 1.6 miles

Blazing: Pink diamond. Two bridges (B8 & B9). Junctions with Equestrian Loop #2, Equestrian Loop #3 & Dog Creek Outer Loop. Includes a 'short-cut,' bypassing a loop along the northern peninsula.

Equestrian Spur #1

Easy - Natural surface - About 0.2 miles

Blazing: Blue diamond. Gentle slope. No bridges. Connects the parking lot to both Equestrian Loop #1 & Equestrian Connector #1 (also blazed in blue diamonds).

LONG HIKING TRAILS

Dog Creek Inner Loop

Easy - Natural surface - About 0.7 miles

This is a mixed-use trail for both hikers & equestrians (no bicycles permitted). Observe proper etiquette. Blazing: Purple rectangle. Gentle slopes. No bridges. Junctions with: Dog Creek Outer Loop (an external perimeter).

Dog Creek Outer Loop

Easy - Natural surface - About 1.2 miles

This is a mixed-use trail for both hikers & equestrians (no bicycles permitted). Observe proper etiquette. Blazing: Purple rectangle. Two bridges (B4 & B5). Junctions with: Dog Creek Inner Loop & the following trails, which are for riders only: Equestrian Connector #1; Equestrian Loop #2, & Equestrian Loop #4.

Hiking Connector #1

Easy to moderate - Natural surface - About 0.8 miles

This trail crosses North Browning Bridge Road. Use caution. Blazing: Green rectangle. No bridges. Connects the parking lot to Hiking Connector #1 & Hiking Loop #1.

Hiking Connector #2

Easy - Natural surface - About 0.5 miles

Trail crosses North Browning Bridge Road. Use caution. Blazing: Dark-red rectangle. No bridges. Connects Terrapin Cove Trail to Hiking Connector #1 & Hiking Loop #1.

Hiking Loop #1

Easy to moderate - Natural surface - About 1.3 miles

Blazing: Yellow rectangles. Two bridges (B11 & B12). Junctions with Hiking Connector #1, Hiking Connector #2, Hiking Loop #2, & Hiking Loop #3.

Hiking Loop #2

Easy to moderate - Natural surface - About 1.7 miles

Blazing: White rectangles. Three bridges (B13 & B14). Junctions with Hiking Loop #1, Hiking Loop #3, & Hiking Loop #4.

Hiking Loop #3

Moderately strenuous - Natural surface - About 1.5 miles

Blazing: Lavender or pink rectangles. One bridge (B11). Includes views of the lake. Junctions with Hiking Loop #1 & Hiking Loop #2.

Hiking Loop #4

Moderately strenuous - Natural surface - About 1.9 miles

Blazing: Blue rectangles. Four bridges (B14, B15, B16, & B17). Junctions with Hiking Loop #2 & the Whale Tail Spur. Includes views of the lake.

Whale Tail Spur (Hiking)

Moderate - Natural surface - About 1.2 miles

Blazing: Silver rectangles. Two bridges (B17 & B18). Junctions with Hiking Loop #4. Views of the lake & access to a paddle boat ramp.

SHORT HIKING TRAILS

Huckleberry Loop (Hiking)

Easy - Natural surface - About 0.75 miles

Blazing: White rectangle. Parking available at the upper end of the North Boat Ramp (furthest from the water). The Huckleberry Trail begins as a spur, then divides to form a loop. You may hike in either direction for views of the lake. Return back to the spur for views of the Beach Cove. The trail is named after the native Georgia huckleberries, which are related to blueberries.

Parallel Trail (Hiking)

Easy - Paved - About 0.5 miles

Blazing: Purple rectangle. Connects Terrapin Cove Trail to Huckleberry Trail & Woodland Loop. Access to many important amenities (e.g., bathrooms, playgrounds, parking, etc.).

Overlook Trail (Hiking)

Easy - Paved (ADA accessible) - Only a couple hundred yards long

Blazing: White rectangle. Scenic overlook of a fern-laced creek & hardwood bottom land. Parking is available at the visitor center. It also has swings located along the way. Beyond the paved portion, a set of rock steps connects to Terrapin Cove Trail.

Terrapin Cove (Hiking)

Easy - Natural surface - About 1 mile

Blazing: Red rectangle. Junctions with Parallel Trail, Overlook Trail, & Hiking Connector #3. Provides access to the beach, visitor center, RV-campground & cottages. A single-track trail, designed for foot-traffic only. Day-use parking near the beach area or visitor center. The name derived from an old Appalachian term for turtle.

Woodland Loop (Hiking)

Easy - Paved (ADA-accessible) - About 1.5 miles

ADA-accessible & open to bicycles & strollers. Blazing: Green rectangle. Parking near the Beach/Picnic Area. Junctions with Parallel Trail & Dog Creek trails (which are mixed-use). Access to "walk-in" campsites. Signs will warn of the only steep grade on this route.

PADDLE TRAILS

Dog Cove Paddle Trail

Smooth water - About 1 mile

Take a leisurely float around the cove from the kayak shack at the boat ramp. Explore the western part of the cove wetlands or fish in shaded areas.

Flat Island Paddle Trail

Swift current after heavy rains - About 3 miles

Travel upstream to the most northern island in Lake Lanier. See rocky bluffs, reedy shoreline & explore 1-mile Flat Creek near the northern end.

Lost Cove Paddle Trail

Smooth water - About 2 miles

Cross the main channel of the Chattahoochee into a larger cove & explore another tributary of the mighty river.

Whale Tail Paddle Trail

Swift current after heavy rains - About 2 miles

Traverse across more open water as your travel downstream (no current) towards the park's largest peninsula, the Whale Tail. Stay in the main center channel for full sun, or explore the shorelines for more plants & wildlife.

Central Area Legend

- Beach
- Beach House
- Boat Ramp
- Boat Slip
- Cottage
- Campsite
- Comfort Station
- Courtesy Dock
- Fish-cleaning Station
- Fishing Pier
- Pay Station
- Tie Line
- Kayak Shack
- No Motor Boats
- AquaCycle Rental / Concessions
- Parking
- Picnic Shelter
- Playground
- Rest room
- Trailhead (long hikes)
- Visitor Center / Park Office
- Bridge (numbered)

